





# PRINCE Dr. K.VASUDEVAN COLLEGE OF ENGINEERING AND TECHNOLOGY

(Approved by AICTE, Affiliated to Anna University & ISO 9001:2015 Certified Institution)  
Medavakkam-Mambakkam Main Road, Ponmar, Chennai-600127

## ALUMNI FEEDBACK ON SYLLABUS - 2017-2018 Computer Science and Engineering (NUMBER OF RESPONDENTS - 13)



*[Signature]*

**PRINCE DR. K. VASUDEVAN COLLEGE OF ENGINEERING AND TECHNOLOGY**  
POMMAR, CHENNAI-600 127.





# PRINCE Dr. K. VASUDEVAN COLLEGE OF ENGINEERING AND TECHNOLOGY

(Approved by AICTE, Affiliated to Anna University & ISO 9001:2015 Certified Institution)  
Medavakkam-Mambakkam Main Road, Ponmar, Chennai-600127

## ALUMNI FEEDBACK ON SYLLABUS – ANALYSIS REPORT

Academic Year

2017-2018

Department

Electronics and Communication Engineering

Number of Respondents

14

Feedback Rate: Strongly Agree (5), Agree (4), Neutral (3), Disagree (2), Strongly Disagree (1)

S. No	Feedback on Syllabus	5	4	3	2	1
1	Are the syllabus helps the students in improving professional competencies?	9	3	1	1	0
2	Is the syllabus suitable to present industry and Domain requirement?	12	2	0	0	0
3	Are the syllabus concepts being useful in promoting ethics and inspiring self-discipline ?	11	2	1	0	0
4	Did the courses enabled to build your future carrier?	9	3	1	0	1
5	Is the course sufficient to enable the students to analyze and identify the necessary solutions?	12	2	0	0	0
6	Is the course providing good balance between theory and applications ?	10	2	1	1	0
7	The syllabus facilitates in enriching knowledge and creates employment opportunities	12	1	1	0	0
8	Rate the syllabus and curriculum	12	1	1	0	0

**PRINCIPAL**

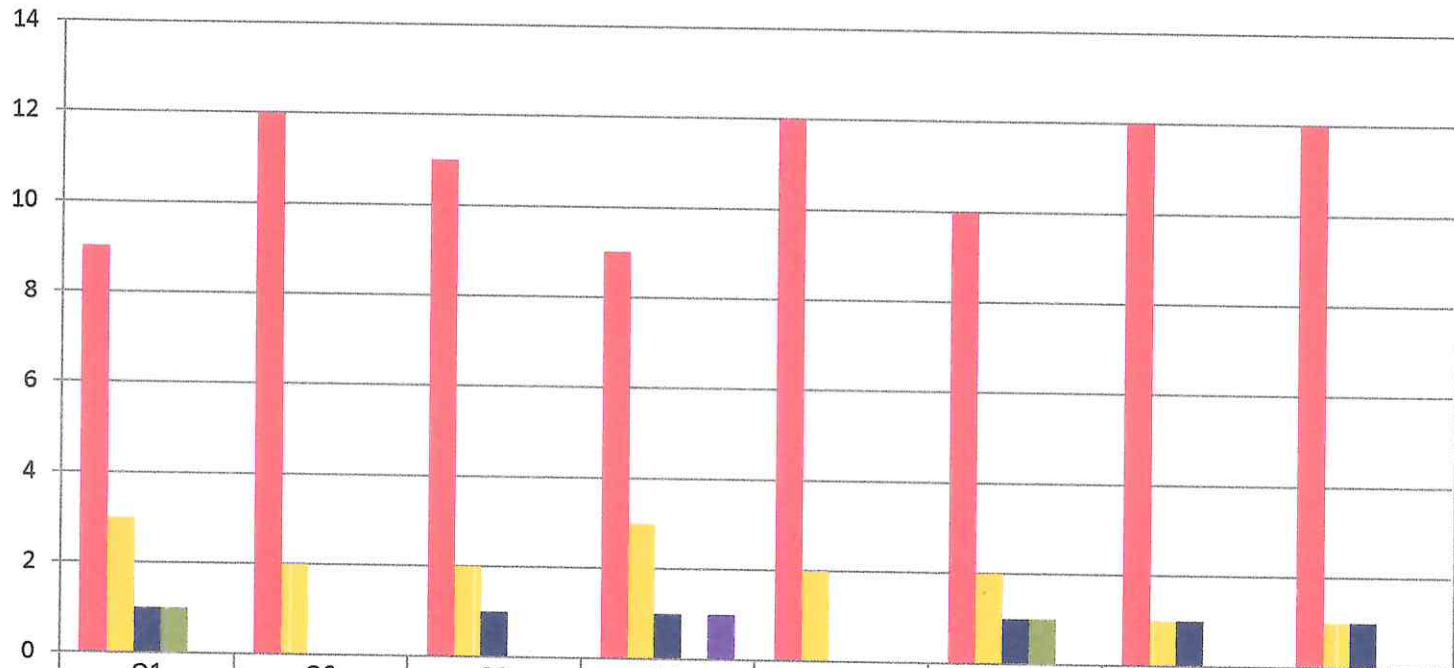
**PRINCE DR. K. VASUDEVAN COLLEGE OF  
ENGINEERING AND TECHNOLOGY**  
POMMAR, CHENNAI-600127



# PRINCE Dr. K.VASUDEVAN COLLEGE OF ENGINEERING AND TECHNOLOGY

(Approved by AICTE, Affiliated to Anna University & ISO 9001:2015 Certified Institution)  
Medavakkam-Mambakkam Main Road, Ponmar, Chennai-600127

## ALUMNI FEEDBACK ON SYLLABUS - 2017-2018 Electronics and Communication Engineering (NUMBER OF RESPONDENTS - 14)



	Q1	Q2	Q3	Q4	Q5	Q6	Q7	Q8
Strongly Agree (5)	9	12	11	9	12	10	12	12
Agree (4)	3	2	2	3	2	2	1	1
Neutral (3)	1	0	1	1	0	1	1	1
Disagree (2)	1	0	0	0	0	1	0	0
Strongly Disagree (1)	0	0	0	1	0	0	0	0

*(Signature)*

**PRINCIPAL**  
**PRINCE DR. K. VASUDEVAN COLLEGE OF ENGINEERING AND TECHNOLOGY**  
**PONMAR, CHENNAI-600 127**





# PRINCE Dr. K.VASUDEVAN COLLEGE OF ENGINEERING AND TECHNOLOGY

(Approved by AICTE, Affiliated to Anna University & ISO 9001:2015 Certified Institution)  
Medavakkam-Mambakkam Main Road, Ponmar, Chennai-600127

## ALUMNI FEEDBACK ON SYLLABUS – ANALYSIS REPORT

Academic Year

2017-2018

Department

Electrical and Electronics Engineering

Number of Respondents

7

Feedback Rate: Strongly Agree (5), Agree (4), Neutral (3), Disagree (2), Strongly Disagree (1)

S. No	Feedback on Syllabus	5	4	3	2	1
1	Are the syllabus helps the students in improving professional competencies ?	4	2	1	0	0
2	Is the syllabus suitable to present industry and Domain requirement ?	5	1	0	1	0
3	Are the syllabus concepts being useful in promoting ethics and inspiring self-discipline ?	4	2	1	0	0
4	Did the courses enabled to build your future carrier?	4	2	1	0	0
5	Is the course sufficient to enable the students to analyze and identify the necessary solutions?	5	1	0	0	1
6	Is the course providing good balance between theory and applications ?	5	2	1	0	0
7	The syllabus facilitates in enriching knowledge and creates employment opportunities	4	2	0	1	0
8	Rate the syllabus and curriculum	5	2	0	0	0

**PRINCIPAL**  
**PRINCE DR. K. VASUDEVAN COLLEGE OF**  
**ENGINEERING AND TECHNOLOGY**  
POMMAR, CHENNAI-600127



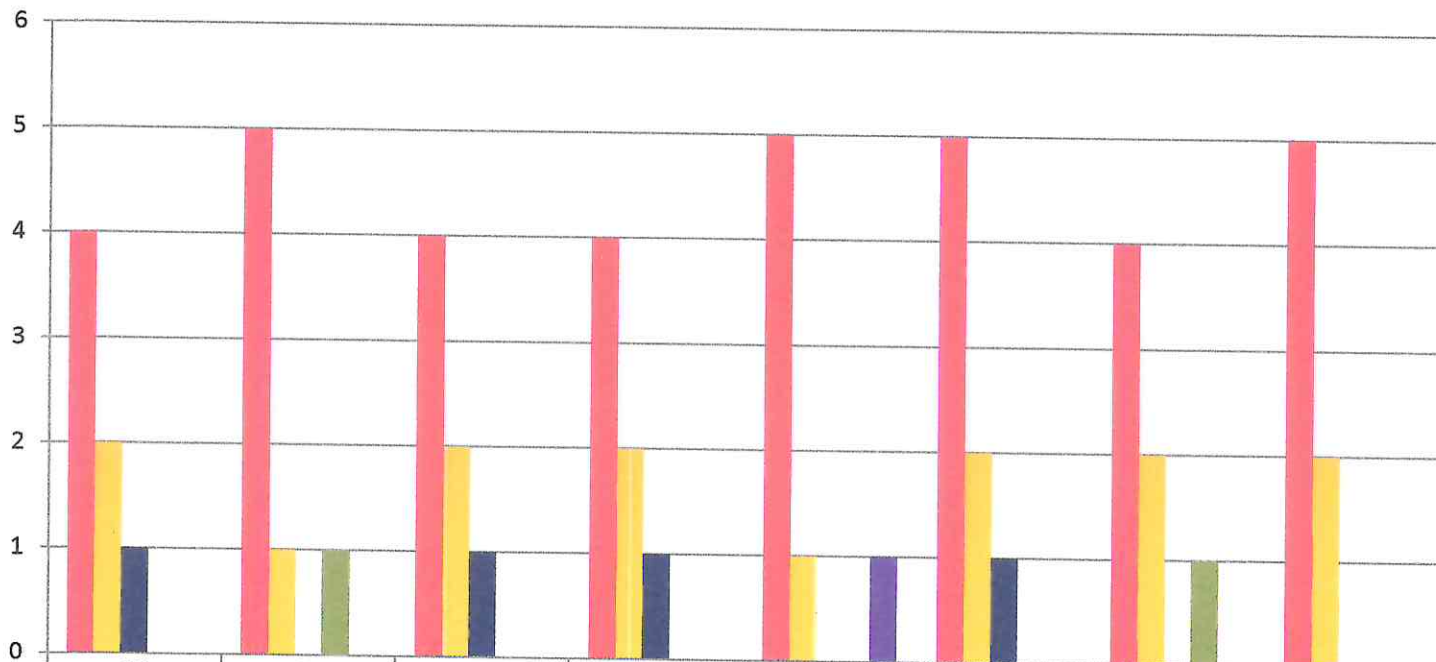
# PRINCE Dr. K.VASUDEVAN COLLEGE OF ENGINEERING AND TECHNOLOGY

(Approved by AICTE, Affiliated to Anna University & ISO 9001:2015 Certified Institution)  
Medavakkam-Mambakkam Main Road, Ponmar, Chennai-600127

## ALUMNI FEEDBACK ON SYLLABUS - 2017-2018

### Electrical and Electronics Engineering

(NUMBER OF RESPONDENTS - 7)



	Q1	Q2	Q3	Q4	Q5	Q6	Q7	Q8
Strongly Agree (5)	4	5	4	4	5	5	4	5
Agree (4)	2	1	2	2	1	2	2	2
Neutral (3)	1	0	1	1	0	1	0	0
Disagree (2)	0	1	0	0	0	0	1	0
Strongly Disagree (1)	0	0	0	0	1	0	0	0

*[Signature]*  
**PRINCIPAL**  
PRINCE DR. K. VASUDEVAN COLLEGE OF  
ENGINEERING AND TECHNOLOGY  
PONMAR, CHENNAI-600 127.





# PRINCE Dr. K.VASUDEVAN COLLEGE OF ENGINEERING AND TECHNOLOGY

(Approved by AICTE, Affiliated to Anna University & ISO 9001:2015 Certified Institution)  
Medavakkam-Mambakkam Main Road, Ponmar, Chennai-600127

## ALUMNI FEEDBACK ON SYLLABUS – ANALYSIS REPORT

**Academic Year** 2017-2018  
**Department** Mechanical Engineering  
**Number of Respondents** 15

Feedback Rate: Strongly Agree (5), Agree (4), Neutral (3), Disagree (2), Strongly Disagree (1)

S. No	Feedback on Syllabus	5	4	3	2	1
1	Are the syllabus helps the students in improving professional competencies ?	12	3	0	0	0
2	Is the syllabus suitable to present industry and Domain requirement ?	9	5	1	0	0
3	Are the syllabus concepts being useful in promoting ethics and inspiring self-discipline ?	9	4	1	0	1
4	Did the courses enabled to build your future carrier?	13	2	0	0	0
5	Is the course sufficient to enable the students to analyze and identify the necessary solutions?	11	4	0	0	0
6	Is the course providing good balance between theory and applications ?	10	4	1	0	0
7	The syllabus facilitates in enriching knowledge and creates employment opportunities	11	3	0	1	0
8	Rate the syllabus and curriculum	12	2	1	0	0

**PRINCIPAL**

**PRINCE DR. K. VASUDEVAN COLLEGE OF  
ENGINEERING AND TECHNOLOGY  
PONMAR, CHENNAI-600 127.**

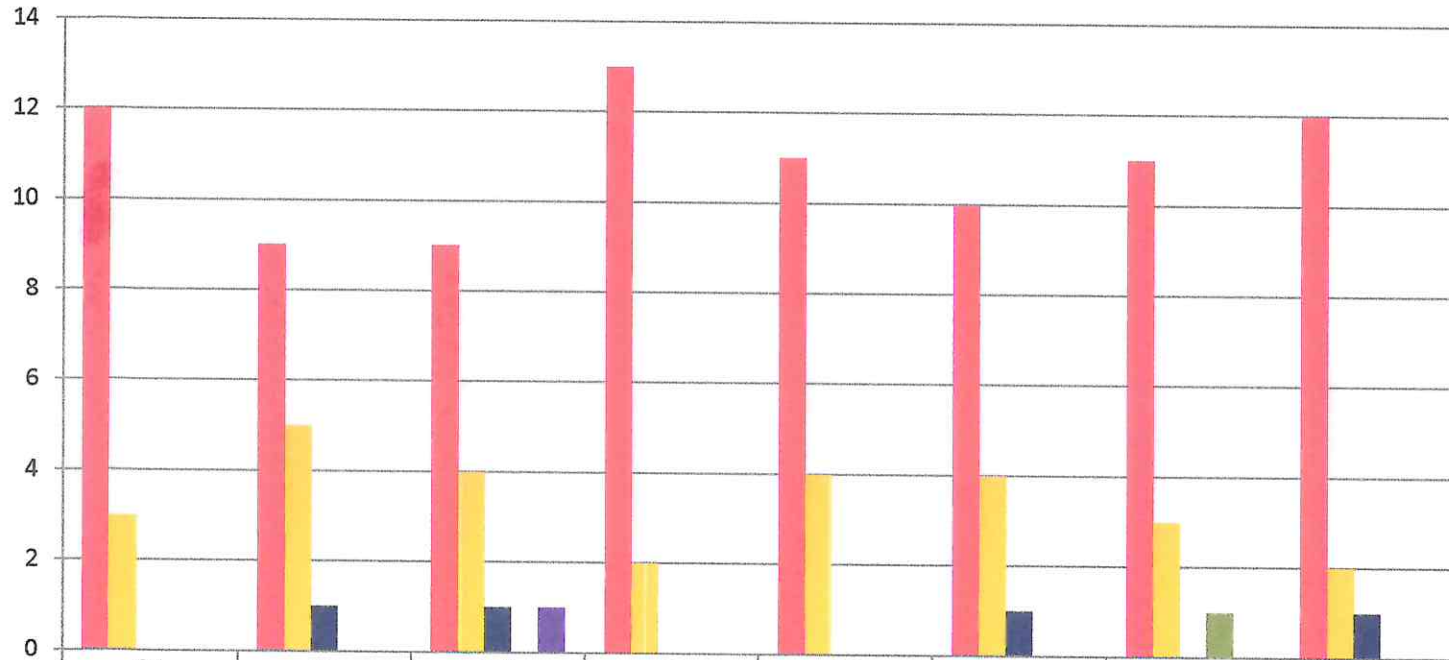


# PRINCE Dr. K.VASUDEVAN COLLEGE OF ENGINEERING AND TECHNOLOGY

(Approved by AICTE, Affiliated to Anna University & ISO 9001:2015 Certified Institution)  
Medavakkam-Mambakkam Main Road, Ponmar, Chennai-600127

## ALUMNI FEEDBACK ON SYLLABUS - 2017-2018

### Mechanical Engineering (NUMBER OF RESPONDENTS - 15)



	Q1	Q2	Q3	Q4	Q5	Q6	Q7	Q8
Strongly Agree (5)	12	9	9	13	11	10	11	12
Agree (4)	3	5	4	2	4	4	3	2
Neutral (3)	0	1	1	0	0	1	0	1
Disagree (2)	0	0	0	0	0	0	1	0
Strongly Disagree (1)	0	0	1	0	0	0	0	0

*[Signature]*  
**PRINCIPAL**  
**PRINCE DR. K. VASUDEVAN COLLEGE OF**  
**ENGINEERING AND TECHNOLOGY**  
**PONMAR, CHENNAI-600 127**